

# Holton Community Hospital VISITOR POLICY



## VISITORS ARE LIMITED

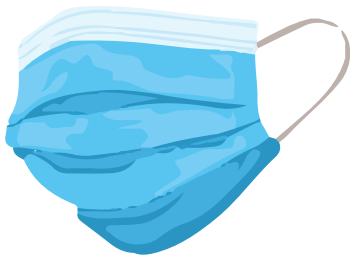
Hospitalized patients will be permitted 1-2 designated visitors. No visitors younger than age 12 are allowed.

Patients for all other services are allowed 1 visitor.



## VISITOR SCREENING

All visitors will be screened for symptoms and risk factors for COVID-19. Any visitor with symptoms or risk factors will be denied entry into the facility. Visitors that refuse screening will be denied entry.



## VISITOR ACCESS

All visitors must wear a face mask and keep it in place at all times while in the facility.



## VISITOR HOURS

Visitation hours are:  
9am to 9pm

---

Please continue to practice social distancing while on Holton Community Hospital grounds.

**If you have COVID-19-like symptoms, call  
(785)364-2126 BEFORE entering our facility.**



HOLTON COMMUNITY HOSPITAL